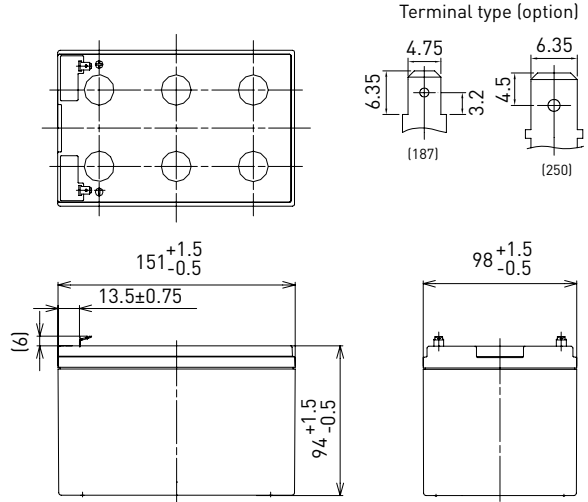


LC-CA1215P

FOR MAIN POWER SUPPLIES.  
CYCLE LONG-LIFE TYPE

DIMENSIONS (MM)



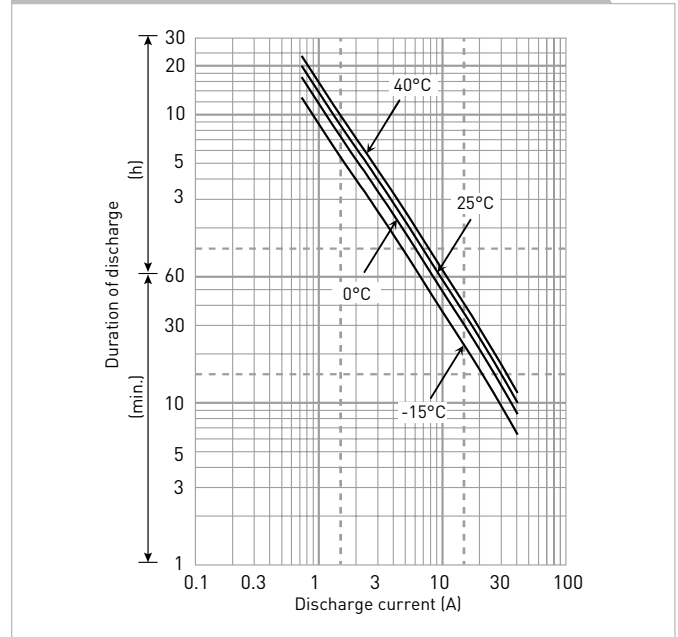
Contents indicated (including the recycle marking, etc.) are subject to change without notice.

Battery case resin: standard (UL94 HB)

SPECIFICATIONS

<b>Name</b>		LC-CA1215P/P1
<b>Nominal voltage</b>		12V
<b>Nominal capacity (20 hour rate)</b>		15Ah
<b>Dimensions</b>	<b>Length</b>	151mm
	<b>Width</b>	98 mm
	<b>Height</b>	100mm
<b>Approx. mass</b>		4.20kg
<b>Terminal</b>		Faston 187/250
<b>Capacity (25°C)</b>	<b>20 hour rate</b>	15Ah
	<b>10 hour rate</b>	13Ah
	<b>3 hour rate</b>	12Ah
	<b>1 hour rate</b>	10Ah
<b>Impedance</b>		Fully charged battery (25°C) 15mΩ
<b>Temperature dependency of capacity (20 hour rate)</b>	<b>40°C</b>	102%
	<b>25°C</b>	100%
	<b>0°C</b>	85%
	<b>-15°C</b>	65%
<b>Self-discharge (25°C)</b>	<b>After 3 month</b>	91%
	<b>After 6 month</b>	82%
	<b>After 12 month</b>	64%

DURATION OF DISCHARGE VS. DISCHARGE CURRENT



WATT TABLE (25°C)

Cut-off	3min.	5min.	10min.	15min.	20min.	30min.	45min.	1h	1.5h	2h	3h	4h	5h	6h	10h	20h
9.6V	850	682	455	350	292	217	157	123	83.9	65.0	47.1	36.0	29.9	25.2	16.2	8.75
9.9V	799	646	444	343	286	213	156	122	82.8	64.6	46.9	35.8	29.7	25.1	16.1	8.74
10.2V	741	607	433	336	281	211	154	121	81.4	63.4	46.4	35.7	29.5	24.9	15.9	8.72
10.5V	667	555	404	318	270	206	152	118	80.1	61.9	45.7	35.5	29.4	24.8	15.8	8.70
10.8V	576	497	368	300	263	199	146	116	77.7	59.6	44.8	35.1	28.9	24.5	15.7	8.66

AMPERE TABLE (25°C)

Cut-off	3min.	5min.	10min.	15min.	20min.	30min.	45min.	1h	1.5h	2h	3h	4h	5h	6h	10h	20h
9.6V	76.5	61.2	40.6	30.4	25.2	18.5	13.4	10.5	7.11	5.49	3.96	3.01	2.49	2.10	1.35	0.755
9.9V	71.8	58.0	39.7	29.9	24.7	18.2	13.3	10.4	7.01	5.45	3.94	3.00	2.48	2.09	1.34	0.753
10.2V	66.6	54.5	38.6	29.2	24.2	18.1	13.1	10.3	6.89	5.36	3.90	2.99	2.46	2.08	1.33	0.752
10.5V	59.9	49.8	36.1	27.6	23.3	17.6	13.0	10.0	6.78	5.22	3.84	2.97	2.45	2.07	1.32	0.750
10.8V	51.8	44.6	32.9	26.1	22.7	17.0	12.5	9.82	6.58	5.03	3.77	2.94	2.41	2.04	1.31	0.747

All mentioned values are average values

LC-CA1215P

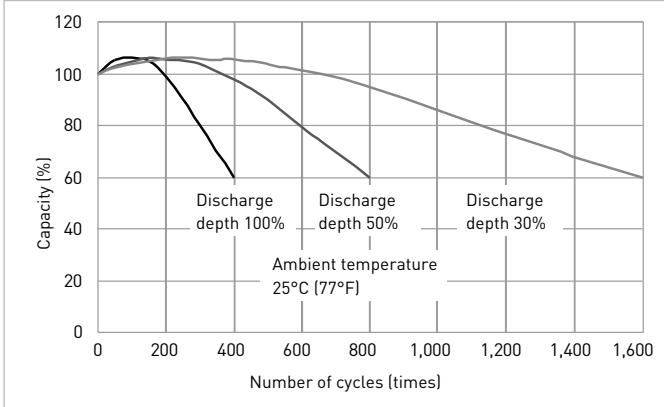
CHARGING METHOD (25°C)

Cycle use  
Control voltage: 14.5V - 14.9V  
Initial current: 6.00A or smaller

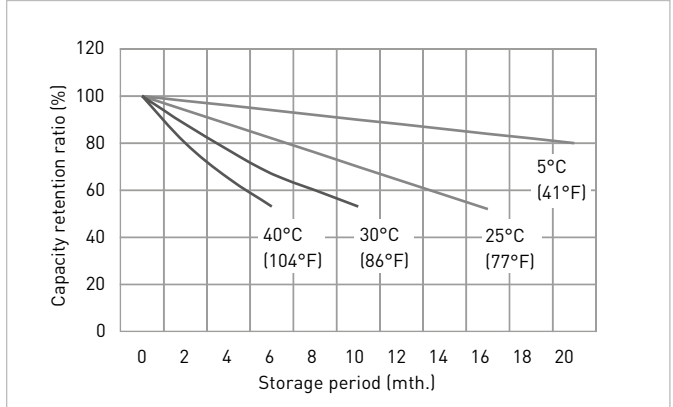
CUT-OFF VOLTAGE

Discharge current	0.750A - 3.00A	3.00A - 7.50A	7.50A - 15.0A	15.0A - 30.0A	30.0A - 45.0A
Cut-off voltage	10.5V	10.2V	9.9V	9.3V	8.7V

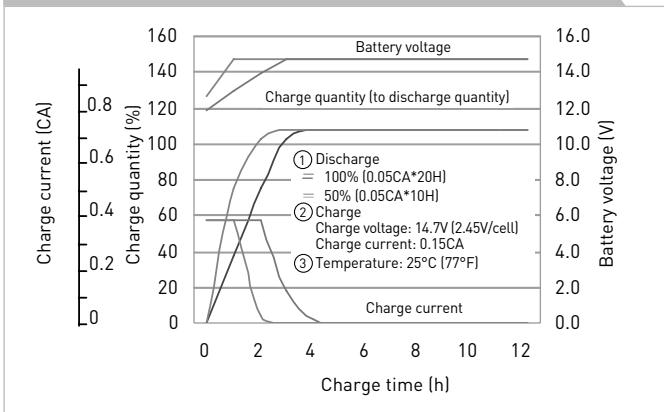
CYCLE LIFE VS. DEPTH OF DISCHARGE (ACC. IEC 61056)



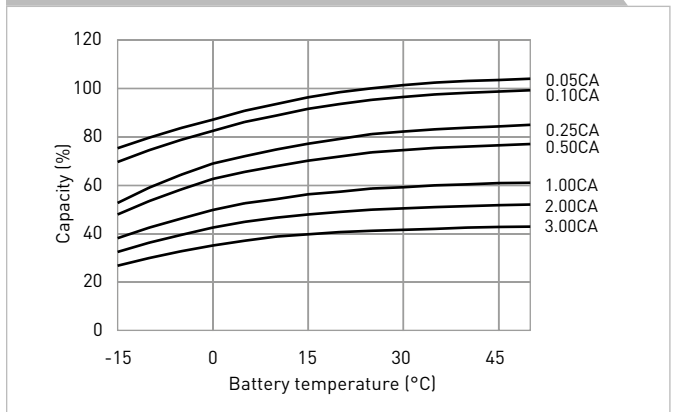
RESIDUAL CAPACITY TEST RESULT



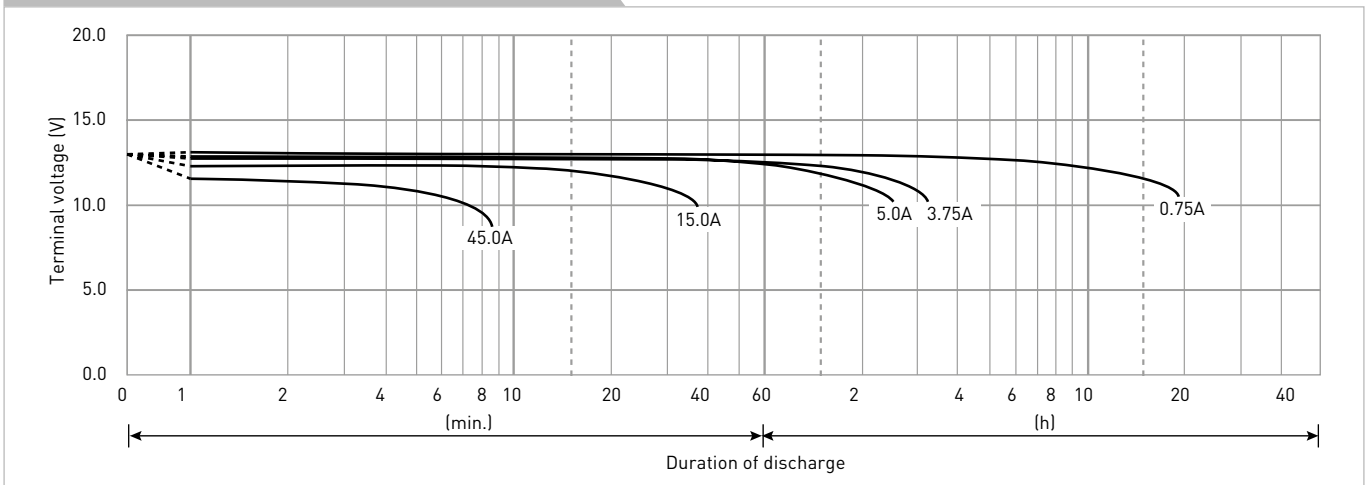
CONSTANT-VOLTAGE CONSTANT-CURRENT CHARGE CHARACTERISTICS FOR CYCLE USE



DISCHARGE CAPACITY BY TEMPERATURE AND BY DISCHARGE CURRENT



DISCHARGE CHARACTERISTICS



The data in this document are for descriptive purposes only and are not intended to make or imply any guarantee or warranty. Regarding handling and safety please consult our VRLA technical handbook chapter 1.