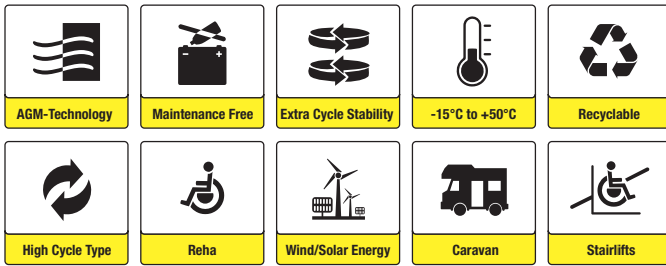




⊕⊖ **sunbattery**®

HC12-36 M6 (12V36Ah)



Applications

- Electric tools
- Vehicle in place of walking
- Lawn mowers
- Golf trolleys
- Portable apparatus, lights and instruments
- Electric toys
- Portable power
- Wheelchairs
- Medical equipments
- Wind/Solar energy
- Electric boats
- Caravan

Certificates



Conform to IEC60896-21&22

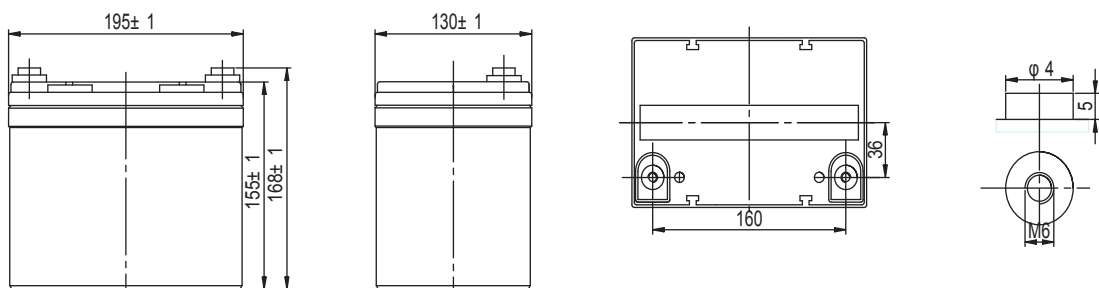
Specifications

Nominal Voltage	12V	Nominal Oper. Temp. R.	25±3°C
Nominal Capacity	36.20Ah (C ₂₀ , 1.75V/cell)	Cycle Use	Initial Charging Current less than 9.9A. Voltage 14.4V~14.7V at 25°C. Temperature Coefficient -30mV/°C.
Approx. Weight	11.0kg	Standby Use	Initial Charging Current less than 9.9A. Voltage 13.5V~13.8V at 25°C Temp. Coefficient -20mV/°C
Terminal	M6	Capacity affected by Temp.	40°C 103% 25°C 100% 0°C 86%
Container Material	ABS UL94 HB (Optional: V0)	Self Discharge	HC batteries may be stored for up to 6 months at 25°C and then a freshening charge is required. For higher temperatures the time interval will be shorter.
Rated Capacity (25°C)	36.20Ah/1.81A, 20hr, 1.75V/cell 35.30Ah/3.53A, 10hr, 1.75V/cell 31.55Ah/6.31A, 5hr, 1.75V/cell 29.13Ah/9.71A, 3hr, 1.60V/cell 24.20Ah/24.20A, 1hr, 1.60V/cell	Cycle Life	Approx. 650 Cycles at 50% DOD
Max. Discharge Current	330A (5s)		
Internal Resistance	Approx. 10mΩ		
Operating Temp. Range	Discharge: -15~50°C Charge: 0~40°C Storage: -15~40°C		

Dimensions

■ M6 Terminal

Unit: mm [inches]





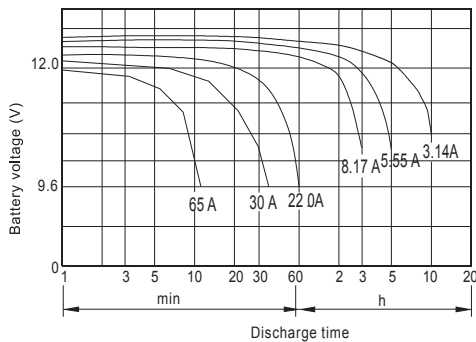
Constant Current Discharge (Amperes) at 25°C

End Point	5min	10min	15min	30min	1h	3h	5h	10h	20h
1.60V/cell	129	92.5	66.9	41.7	24.2	9.71	6.52	3.61	1.96
1.65V/cell	123	88.9	66.2	41.1	28.7	9.63	6.48	3.65	1.94
1.70V/cell	115	83.5	65.4	40.2	23.1	9.42	6.40	3.62	1.85
1.75V/cell	107	78.3	64.10	39.1	22.3	9.35	6.31	3.53	1.81
1.80V/cell	95	73.8	63.25	38.4	21.15	9.02	6.28	3.49	1.75

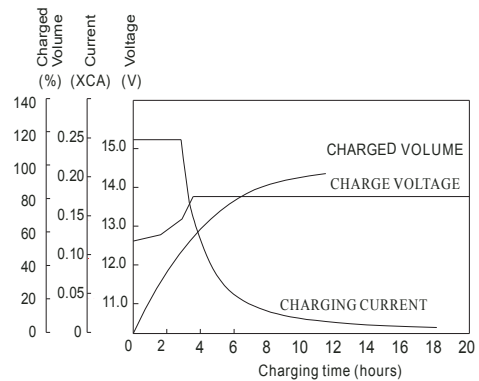
Constant Power Discharge (Watts/cell) at 25°C

End Point	5min	10min	15min	30min	1h	3h	5h	10h	20h
1.60V/cell	233.67	173.67	138.83	81.33	48.00	20.50	13.08	7.72	3.97
1.65V/cell	230.17	166.20	135.79	80.00	47.50	20.17	12.93	7.63	3.92
1.70V/cell	214.00	157.00	130.50	78.33	46.83	20.02	12.80	7.45	3.85
1.75V/cell	202.50	149.17	125.56	77.02	46.17	19.67	12.65	7.33	3.80
1.80V/cell	187.50	141.50	122.83	76.00	45.50	19.17	12.47	7.20	3.72

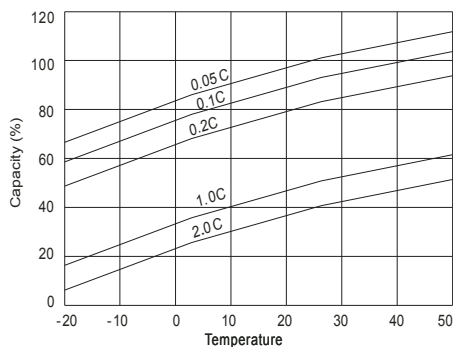
Discharge Characteristics



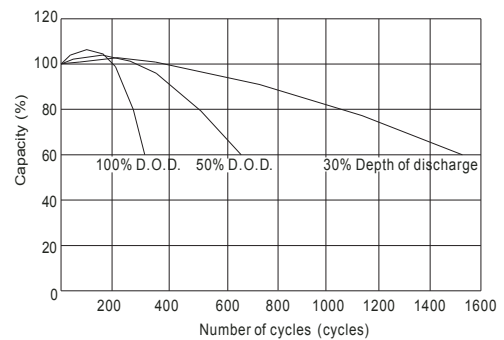
Float Charging Characteristics



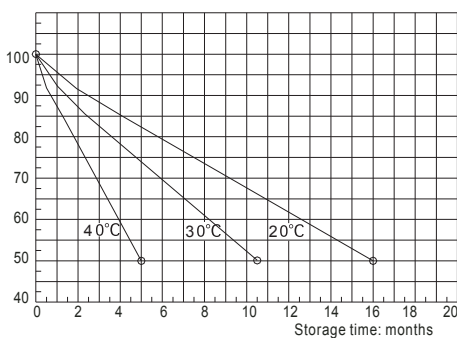
Temperature Effects in Relation to Battery Capacity



Cycle Service Life in Relation to Depth of Discharge



Self Discharge Characteristics



Temperature Effects on Float Life

